

Tolworth Infant and Junior School

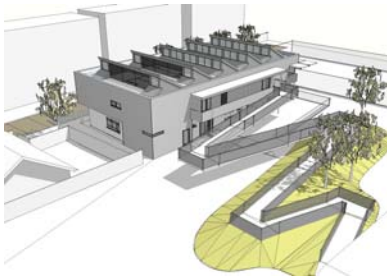


Client Name: Royal Borough of Kingston
Project: Demolition of existing dining block; design and new build of new dining facilities and children's centre
Date: 2008 - current
Value: £1.2m
Service: Project Management, Architecture, Building Surveying, CDM Co-ordination, Clerk of Works, M&E, Structural Engineering



Project Overview

Keegans were awarded the project management and design of works required for the demolition of the Tolworth Infant and Junior Schools existing dining block and its replacement with a new dining facility, a new Children's Centre and a 'bulge' classroom to serve both the schools and the greater community.



The new facilities are to blend aesthetically with the existing main school building while creating a positive, safe and secure environment for learning incorporating good ventilation and natural light.



This project will demonstrate the principles of sustainability and design for ease of maintenance and low whole life costs; and it aims to meet the DCSF 60% Zero Carbon Emission target. The project will also comply with statutory documents in order to meet DfES requirements such as the Education Reform Act 1988, School Premises Regulations, Disability Discrimination Act 1995; Building Regulations, Special Education Needs and Disability Act 2001.